

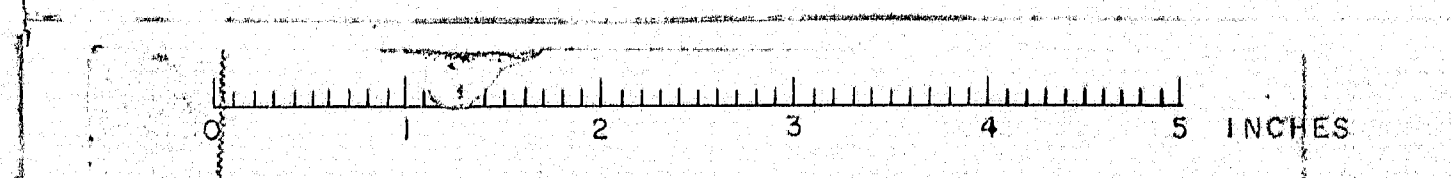
RAIL NOTES:
CURB & SOWK TO BE CAST AFTER SLAB IS PLACED. STEEL FOR POSTS TO BE PLACED BEFORE SOWK IS PLACED. THE PRECAST BARS SHALL PROTECT 2" INTO POST FORMS. WEAP THE TONGUE END WITH 2 LAYERS HEAVY ROOFING. BUILD POST FORMS & CAST POSTS. ALL EXPOSED EDGES OF CONCRETE TO BE CHAMFERED 1" UNLESS OTHERWISE NOTED.
WIRE STIRRUPS FOR RAIL BAR SHALL BE CONSTRUCTED IN THE FIELD FROM A SINGLE STRAND OF #9 ANNEALED WIRE. IN FORMING STIRRUPS, MAKE A COMPLETE TURN AROUND EACH BAR.

REINFORCING STEEL SCHEDULE									
MARK	SIZE	NO	LENGTH	REMARKS	MARK	SIZE	NO	LENGTH	REMARKS
V1	8	78	17'-6"	FRAME-LEG	S1	2	66	3'-11"	*FRAME SOWK
V2	8	158	17'-0"	"	S2	"	66	4'-4"	"
V3	8	158	15'-0"	*FRAME FOOTING	H1	4	100	3'-3"	*RAIL POSTS
F1	1	39	32'-0"	FRAME-SLAB	H2	"	16	3'-7"	"
F2	8	39	32'-0"	"	SW1	2	66	4'-8"	FRAME SOWK
F3	8	40	32'-10"	"	SW2	"	9	32'-2"	"
F4	1	78	12'-13"	*HAUNCH	P1	4	34	10'-10"	*RAIL POST-RET. WALL
F5	8	80	12'-13"	"	P2	"	24	8'-34"	*" - FRAME
F6	8	172	21'-0"	" TRANS					
R1	2	60	4'-11 1/2"	RAIL BAR					
R2	2	24	5'-3"	"					
R3	2	168	5'-6 1/2"	"					
R4	2	24	6'-4"	"					
C1	4	4	26'-0"	APP. CURB					
C2	4	4	29'-6"	"					
C3	4	4	13'-0"	"					

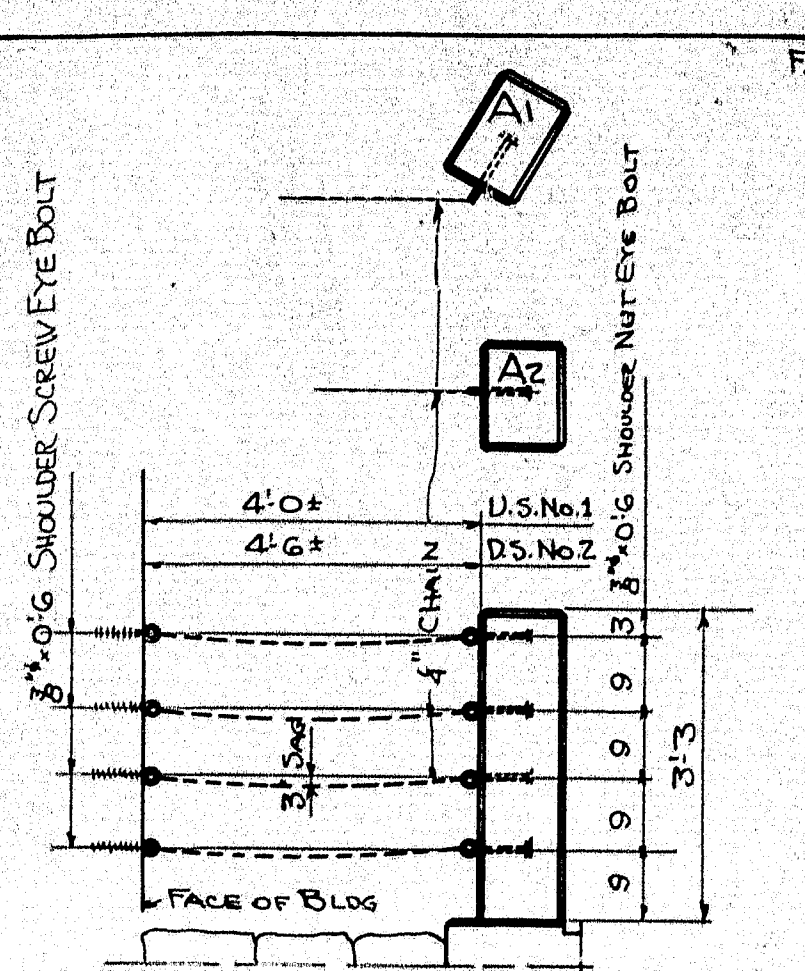
ALL STEEL PLAIN ROUND BARS, STRUCTURAL GRADE. DIMENSIONS TO 1/8" OF BARS - ITEM 38

DESIGN: HIS LOADING, $n=10$, $f_s=16000 \text{ psi}$, $f_c=9000 \text{ psi}$
BACKFILL FRAME LEGS SIMULTANEOUSLY
VIBRATE ALL CONCRETE, UNLESS ENGINEER PERMITS OTHERWISE
COVER CONST. JOINTS AT HAUNCH & LEG ON BACKSIDE WITH 2 LAYERS OF HEAVY ROOFING. COAT SURFACE OF CONCRETE & BACKSIDE OF EACH LAYER AS APPLIED WITH HOT TAR OR ASPHALT. ROOFING TO BE 10" WIDE. RECESS AREA, TO BE COVERED, 4" BY NAILING THIN STRIPS TO FORMS BEFORE PLACING CONC.
COST OF CAST IRON DRAINS, HEAVY ROOFING, EXP. JT. MAT'L, VIBRATING CONCRETE, SHALL BE INCLUDED IN COST OF CONCRETE.
COST OF SETTING DOVILLS SHALL BE INCLUDED IN COST OF REINF. STEEL.
WORK SHEETS 49 & 50 TOGETHER.

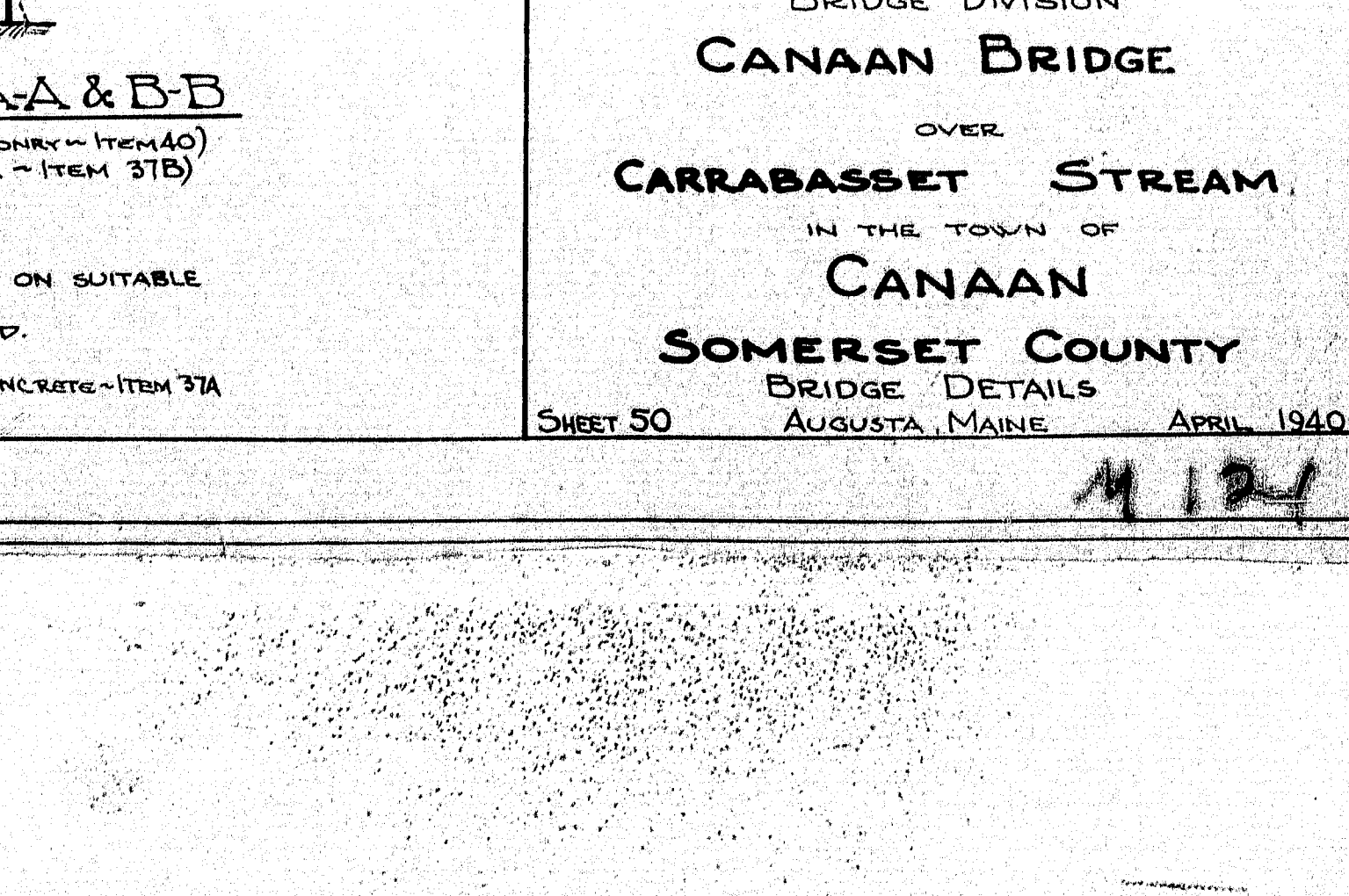
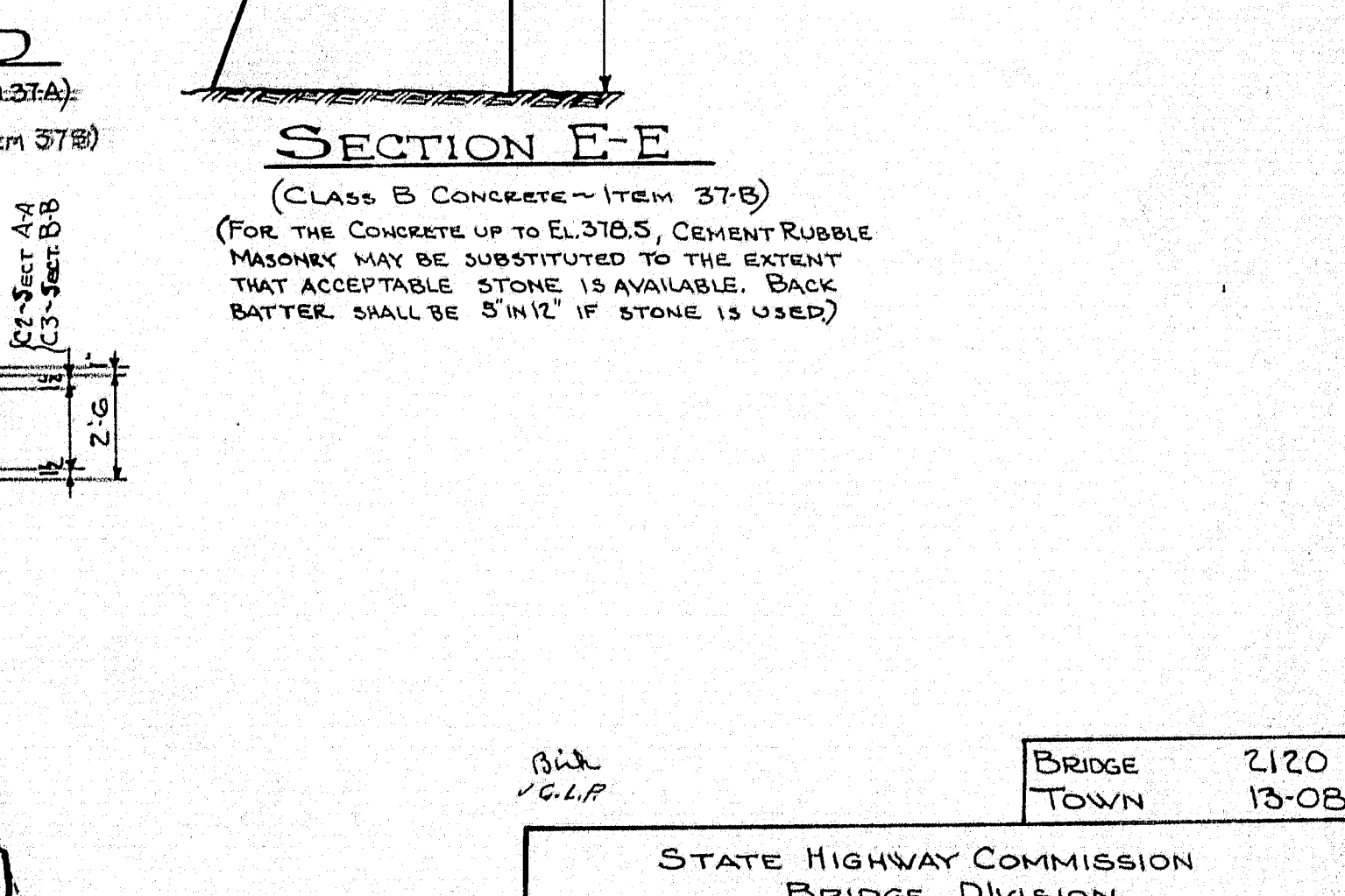
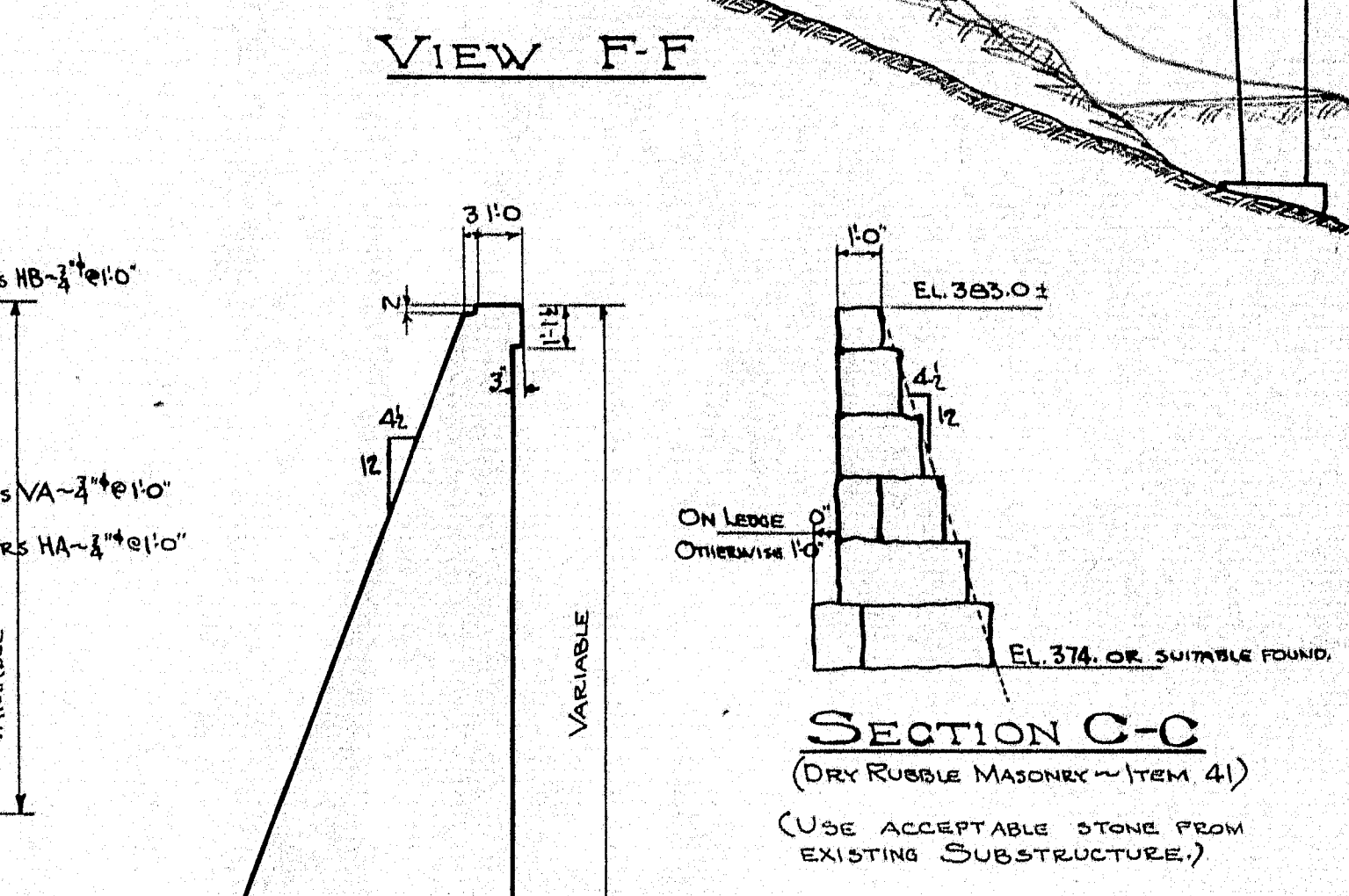
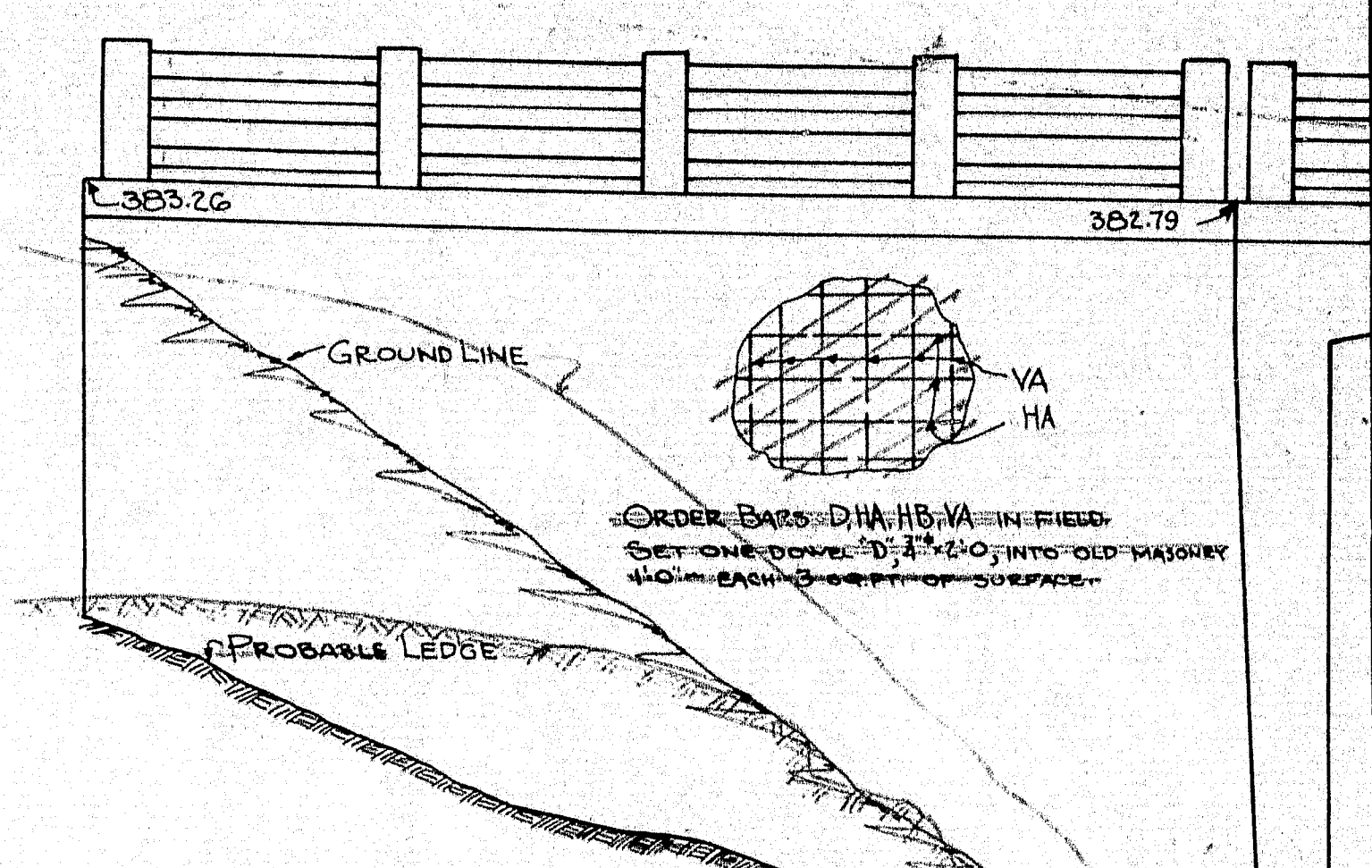
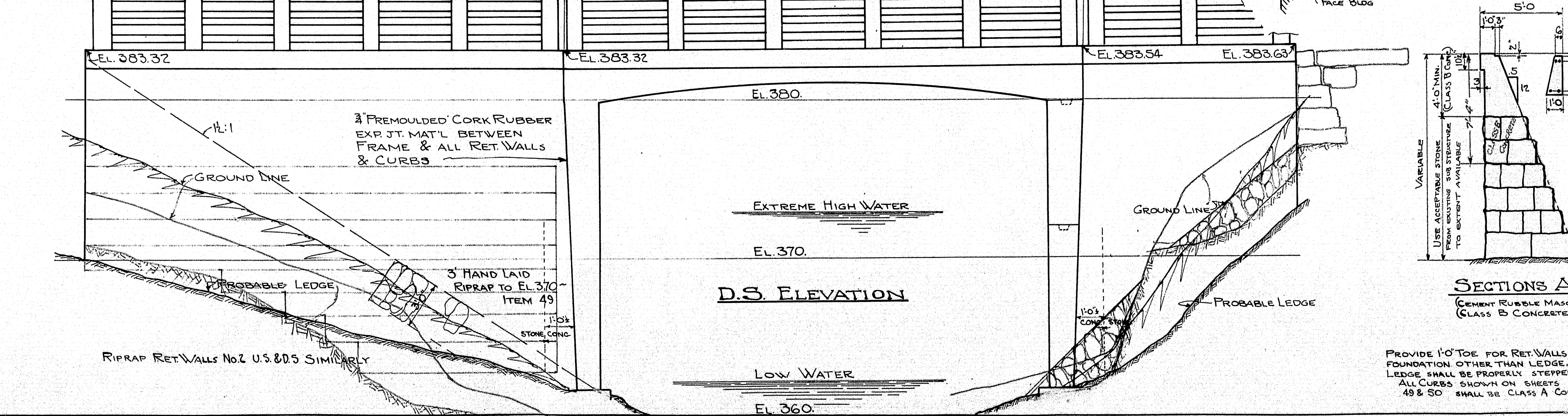
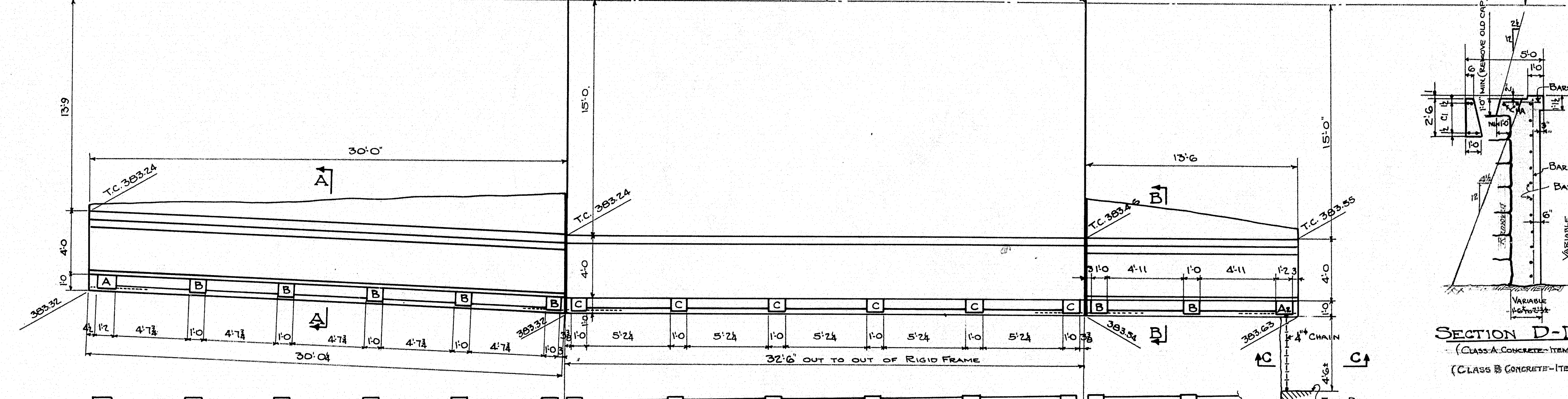
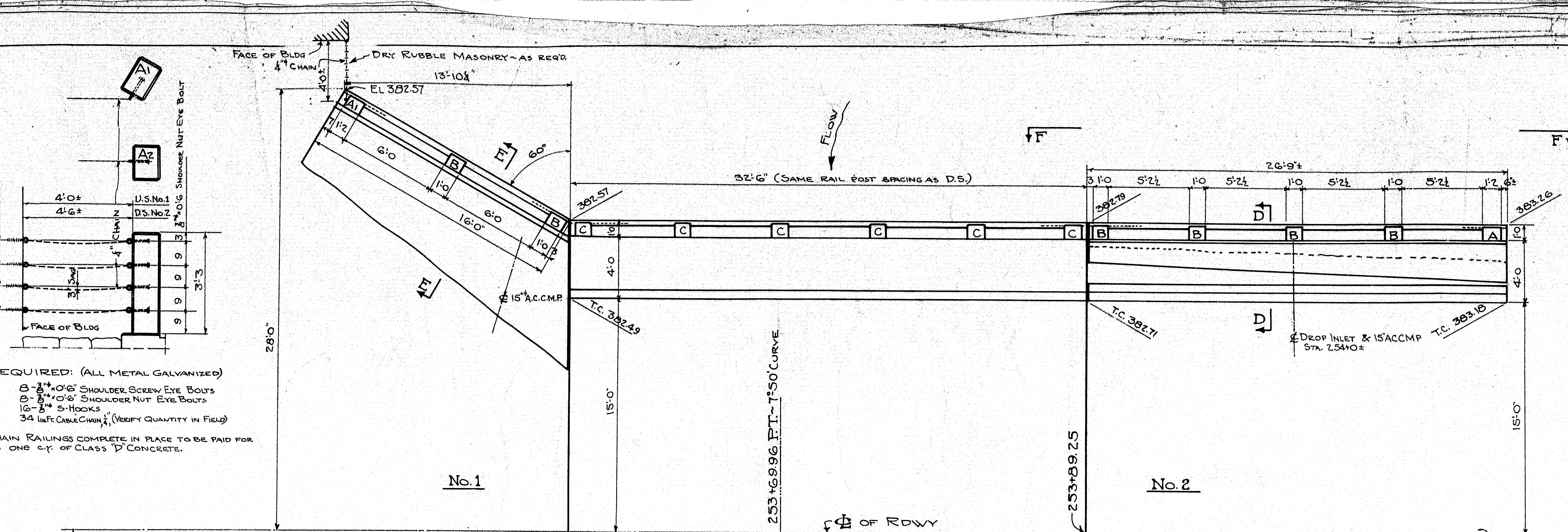
STATE HIGHWAY COMMISSION
BRIDGE DIVISION
CANAAN BRIDGE
OVER
CARRABASSET STREAM
IN THE TOWN OF
CANAAN
SOMERSET COUNTY
BRIDGE DETAILS
SHEET 49 AUGUSTA, MAINE APRIL 1940



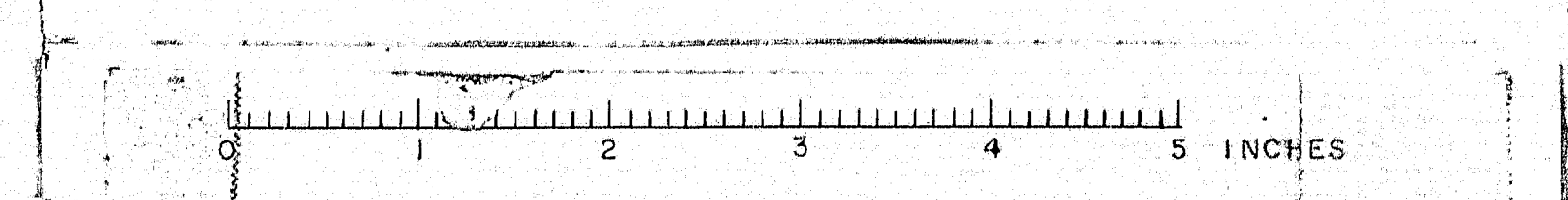
FED. ROAD DIST. NO.	STATE	FED. AID PROJ. NO.	SHEET NO.	TOTAL SHEETS
2	MAINE	2010	50	50

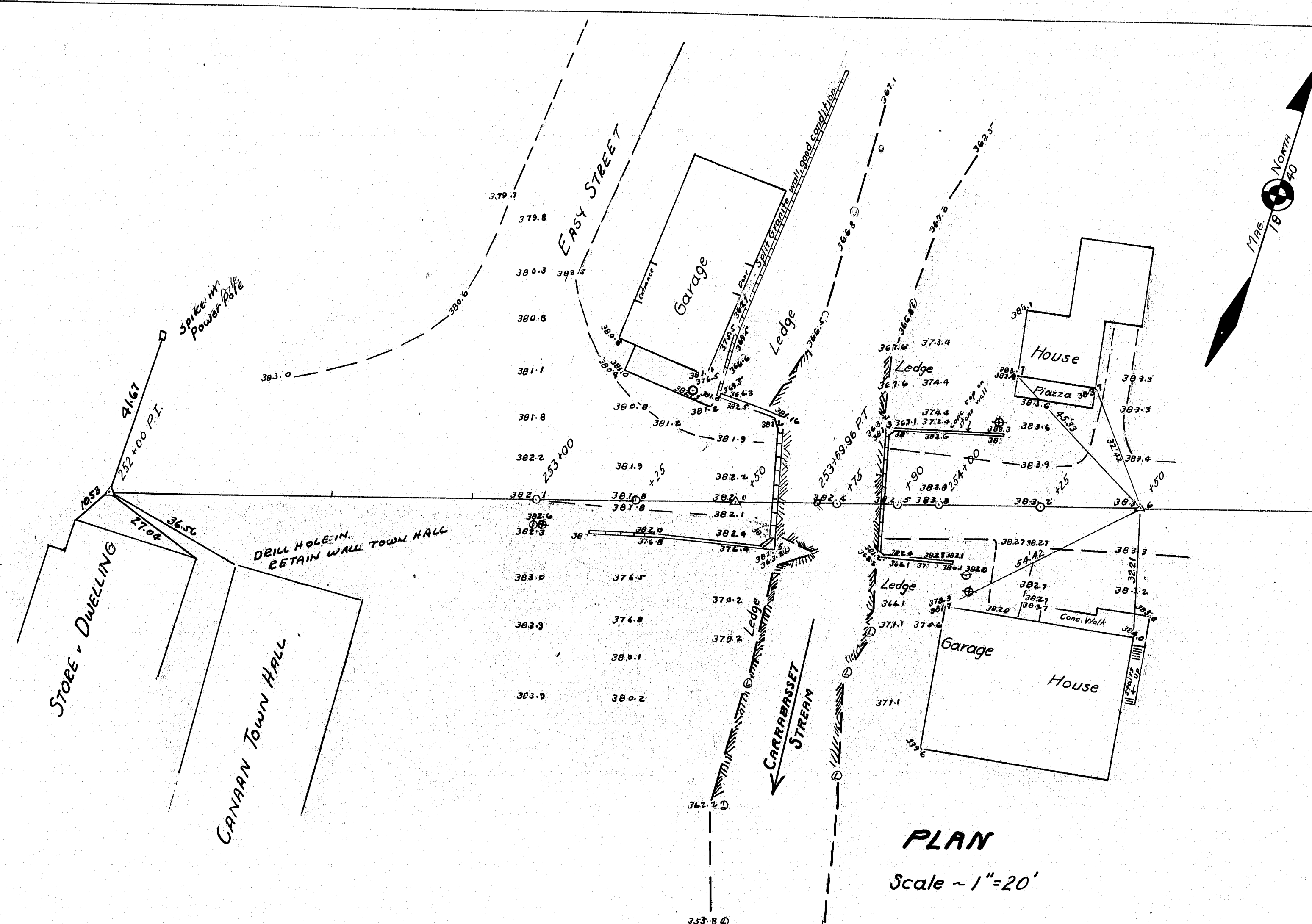


REQUIRED: (ALL METAL GALVANIZED)
 3/4" D.S. SHOULDER SCREW EYE BOLTS
 3/4" D.S. SHOULDER NUT EYE BOLTS
 1/2" D.S. CHAINS (VERIFY QUANTITY IN FIELD)
 CHAIN RAILINGS COMPLETE IN PLACE TO BE PAID FOR AS ONE C.Y. OF CLASS 'D' CONCRETE.



BRIDGE 2120
 TOWN 13-08
 STATE HIGHWAY COMMISSION
 BRIDGE DIVISION
CANAAN BRIDGE
 OVER
CARRABASSET STREAM
 IN THE TOWN OF
CANAAN
SOMERSET COUNTY
 BRIDGE DETAILS
 SHEET 50 AUGUSTA, MAINE APRIL 1940





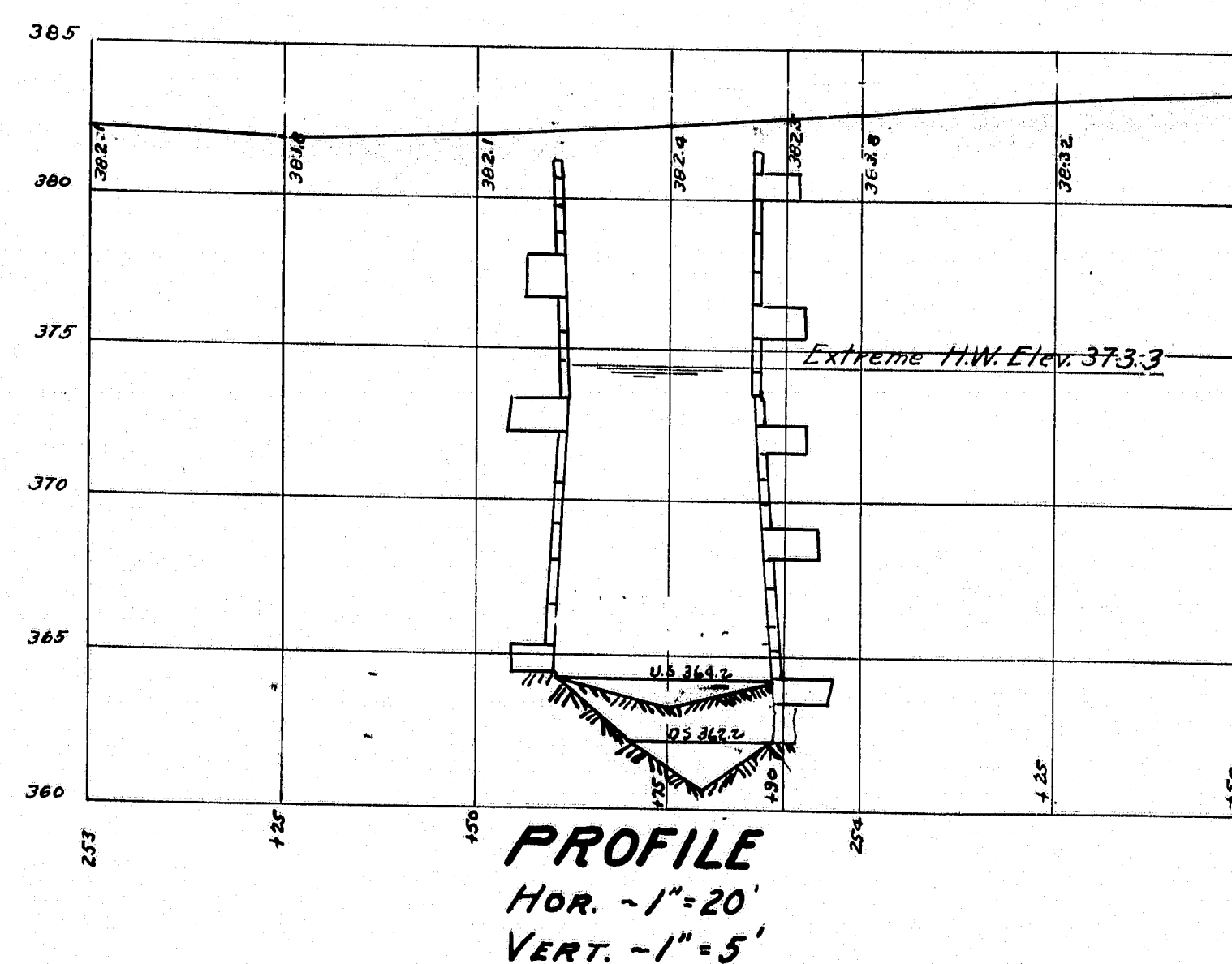
NOTES

SUPERSTRUCTURE: Eight 16" I-beam stringers good condition. Corrugated metal arch between stringers, metal rusted. Five 1" x 1/2" tie bars. Beams rest on stone, wedged level with iron plates.

SUBSTRUCTURE: Abut. #2 of split granite, roughly laid dry. Solid looking. Few headers. Bottom part out of plumb. Abut. #1 same construction as Abut. #2. Bad bulge in center. Not as many headers. Looks bad. Both abuts mortared to ledge.

FOUNDATION: Ledge all over streambed. Rises from D.S. corners. U.S. side probably level.

STREAM: Very swift current at high stages. Extreme high water about 8.0' below bridge seat.



Bridge built on Highway Limit
to Station

98-11

BRIDGE - 2120	SURVEY BLANK
TOWN - 13-08	PLOTTED E.M.V.
STATE HIGHWAY COMMISSION BRIDGE DIVISION	
CANAAN BRIDGE	
OVER	
CARRABASSET STREAM	
IN THE TOWN OF	
CANAAN	
SOMERSET COUNTY	
SURVEY PLAN	
SHEET 1 OF 1	
AUGUSTA, MAINE FEB. 12, 1940	
See M-120-121	